

## Flower Field Hall

Nestled within the Flower Dome, Flower Field Hall engages guests with a sensory experience. Guests will have a memorable time marvelling at the uniqueness of events held here. Overlooking the changing Flower Field display on one side, and a spectacular view of the Marina Bay skyline on the other, this indoor space captivates with its picturesque backdrop of perpetual spring. Specially programmed LED lights add to the enchanting setting by cycling through a rainbow of colours.

### Suitable for

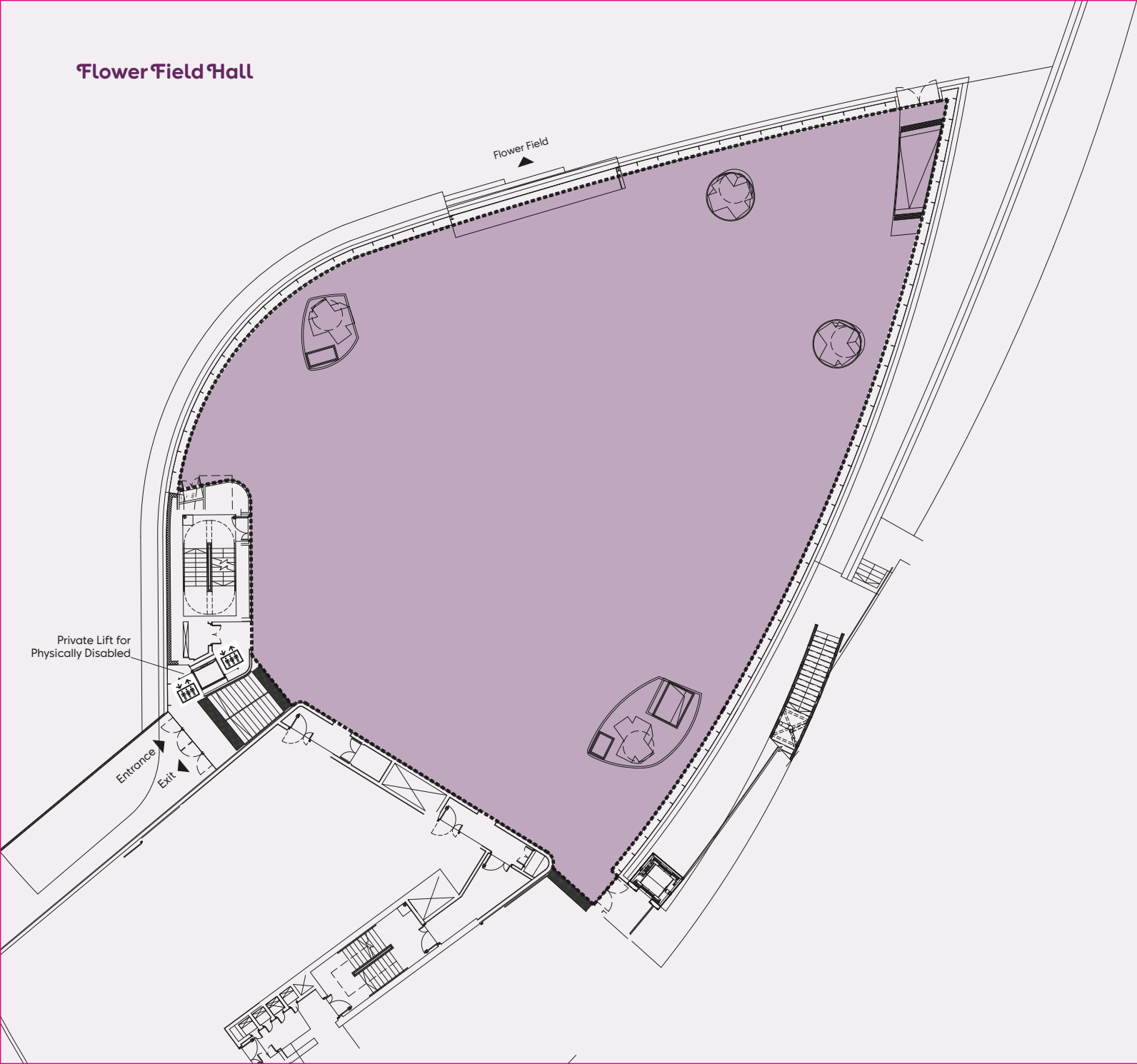
- Fashion Shows
- Gala Dinners
- MICE Events
- Product Launches
- Special-themed Events
- Weddings

### Transport/Access

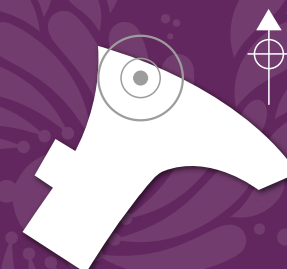
- Chauffeur-driven Garden Cruisers can be pre-arranged to ferry guests to the venue.
- Nearest carpark is Main Gate Basement Carpark with 420 carpark lots.
- About a 5-minute walk from the Visitor Centre, Coach Bay and Main Gate Basement Carpark.
- About a 10-minute walk from Bayfront MRT Station.



# Flower Field Hall



## LOCATION



### Size

- 1,200 square metres

### Capacity

- Up to 1,100 guests (standing cocktail)
- Up to 800 guests (theatre seating)
- Up to 700 guests (sit-down dinner)

### Facilities

- Exclusive entrance to Flower Dome.
- Private hospitality desk for guest registration.
- Exquisite VIP holding room with fully furnished facilities and ensuite bathroom can be pre-arranged.
- Basic sound system, projectors and projection screen.
- Well-equipped kitchen for on-site cooking (Chinese and Western banquet) and food preparation area.
- Exclusive washrooms for guests.
- Private lifts for guests and the physically disabled.
- Loading/unloading lifts.

## Waterview Room

Be enthralled by the Marina Bay waterfront view and Bay East Garden while enjoying precious moments. The Waterview Room can be used as a standalone room for private events or to complement events taking place in the Flower Field Hall as both venues are adjoining.

### Suitable for

- Cocktail Receptions
- Product Launches
- Seminars and Workshops
- Special-themed Events
- Weddings

### Transport/Access

- Chauffeur-driven Garden Cruisers can be pre-arranged to ferry guests to the venue.
- Nearest carpark is Main Gate Basement Carpark with 420 carpark lots.
- About a 5-minute walk from the Visitor Centre, Coach Bay and Main Gate Basement Carpark.
- About a 10-minute walk from Bayfront MRT Station.



## Waterview Room



### LOCATION



### Size

- 600 square metres

### Capacity

- Up to 500 guests (standing cocktail)
- Up to 200 guests (theatre seating)
- Up to 300 guests (sit-down dinner)

### Facilities

- Mobile sound system, projector and projection screen.
- Well-equipped food preparation area including steel counter-tops, ice-making machine, chillers and freezers.
- Exclusive washrooms for guests.
- Loading/unloading lifts.

## The Meadow

The Meadow is Singapore's largest outdoor garden event space - it boasts a standing capacity of up to 30,000 people. The panoramic view of the iconic Conservatories, Supertrees and Singapore's downtown cityscape provides a stunning backdrop for mega events and nights to remember.

### Suitable for

- Concerts
- Festivals and Carnivals
- Incentive Dinners
- Mass Community Events
- Product Launches
- Special-themed Events
- Sports-themed Events

### Transport/Access

- Chauffeur-driven Garden Cruisers can be pre-arranged to ferry guests to the venue.
- Nearest carpark is Meadow Gate Carpark with 285 carpark lots.
- About a 3-minute walk from The Meadow Gate Carpark.
- About a 5-minute walk from Bayfront MRT Station.



# The Meadow

To Bayfront  
MRT Station

The Meadow (Flat)

West Mound

East Mound

## LOCATION



**Size**  
· 22,000 square metres

**Capacity**  
· Up to 30,000 guests (standing)  
· Up to 7,200 guests (theatre seating)  
· Up to 3,600 guests (sit-down dinner)

**Facilities**  
· Eastern and western lawns for sitting.  
· Nearby power distribution boxes for power consumption.  
· Designated access for service vehicles.

## Silver Leaf

Under the canopy of silver-hued Supertrees and overlooking the Dragonfly Lake, Silver Leaf offers an intimate setting for private and exclusive events. The scenic garden setting yields countless picture-perfect moments, with the iconic Flower Dome and Marina Bay skyline in the background.

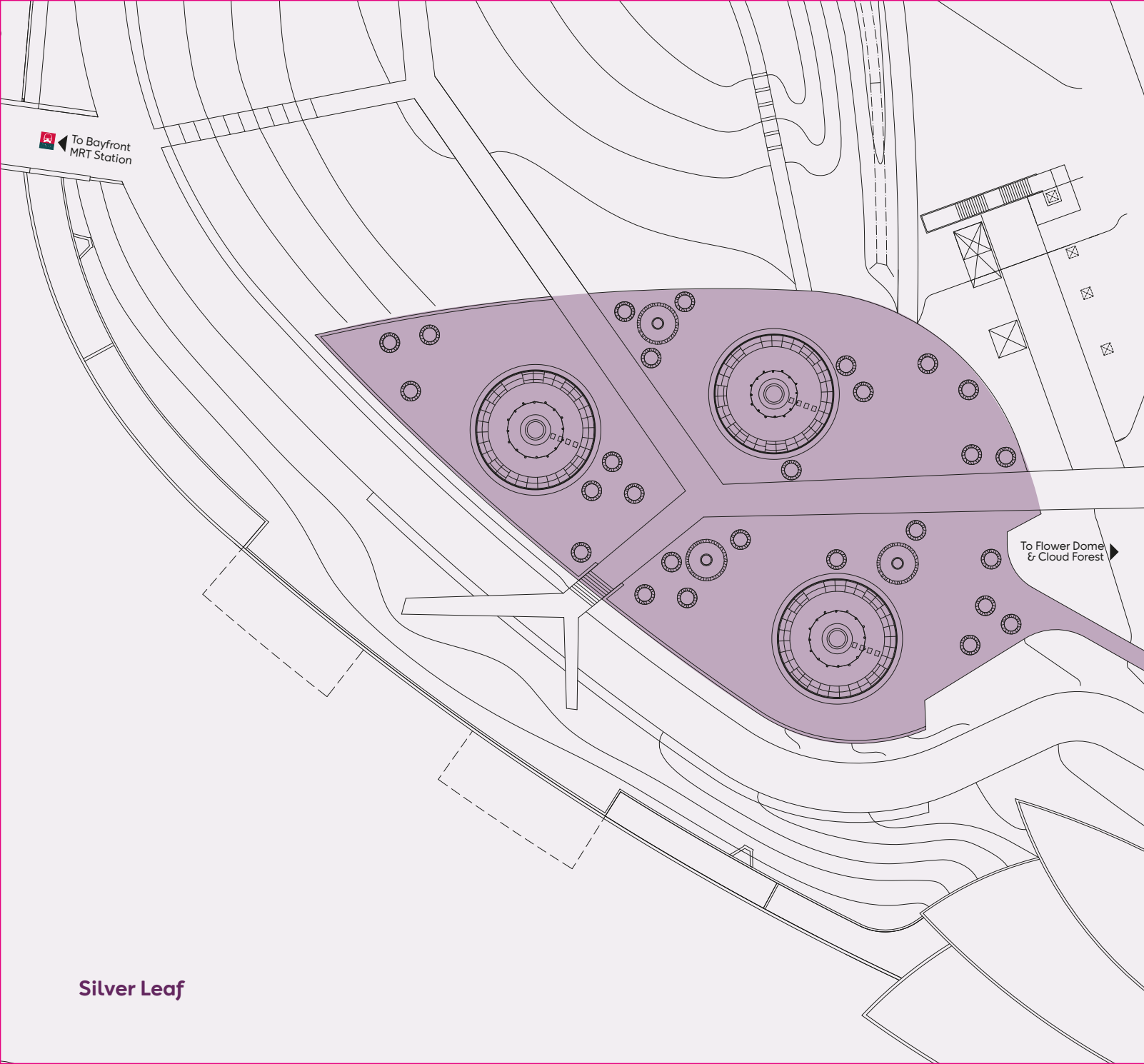
### Suitable for

- Exclusive Cocktail Receptions and Dinners
- Outdoor Weddings and Solemnisations
- Product Launches
- Special-themed Events

### Transport/Access

- Chauffeur-driven Garden Cruisers can be pre-arranged to ferry guests to the venue.
- Nearest carpark is Main Gate Basement Carpark with 420 carpark lots.
- About a 10-minute walk from the Visitor Centre, Coach Bay and Main Gate Basement Carpark.
- About a 5-minute walk from Bayfront MRT Station.





To Bayfront  
MRT Station

To Flower Dome  
& Cloud Forest

## LOCATION



### Size

- 600 square metres

### Capacity

- Up to 500 guests (standing)
- Up to 200 guests (theatre seating)
- Up to 320 guests (sit-down dinner)

### Facilities

- Nearby power distribution boxes for power consumption.
- Designated access for service vehicles.

Silver Leaf



## Secret Life of Trees

With superb views of Supertree Grove, Secret Life of Trees is an elevated yet intimate garden ideal for private functions and exclusive events. The picturesque al fresco setting promises countless photo opportunities and moments to treasure, especially when the Supertrees come alive in an exhilarating display of dancing lights at night.

### Suitable for


- Cocktail Receptions
- Outdoor Weddings and Solemnisations
- Product Launches
- Special-themed Events

### Transport/Access

- Chauffeur-driven Garden Cruisers can be pre-arranged to ferry guests to the venue.
- Nearest carpark is Main Gate Basement Carpark with 420 carpark lots.
- About a 5-minute walk from Visitor Centre, Coach Bay and Main Gate Basement Carpark.
- About a 10-minute walk from Bayfront MRT Station.

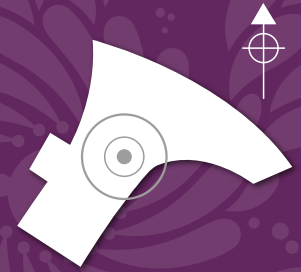


## Secret Life of Trees

 To Bayfront MRT Station

To Flower Dome & Cloud Forest 

## LOCATION



### Size

- 475 square metres (Secret Life of Trees)
- 165 square metres (Flat Lawn)

### Capacity

- Up to 150 guests (standing)

### Facilities

- Mobile sound system and projection setup can be pre-arranged
- Power distribution boxes for power consumption
- North Colonnade area available in case of wet weather

## Champagne @ OCBC Skyway

Arcing across Supertree Grove, OCBC Skyway is an aerial walkway 22 metres above ground. Guests will enjoy a scenic stroll with breathtaking views of the city skyline. The Garden Rhapsody light and sound show will be exclusively scheduled for guests to marvel at the Supertrees in a musical display of special effects.

### Suitable for


- Cocktail Receptions

### Transport/Access

- Available for bookings from 9pm to 11:30pm only
- Chauffeur-driven Garden Cruisers available to ferry guests to the venue.
- Nearest carpark is Main Gate Basement Carpark with 420 carpark lots.
- About a 2-minute walk from Visitor Centre, Coach Bay and Main Gate Basement Carpark.
- About a 5-minute walk from Visitor Centre, Coach Bay and Main Gate Basement Carpark.

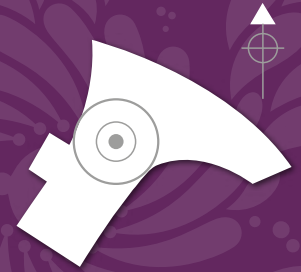


# Champagne @ OCBC Skyway

 To Bayfront  
MRT Station

To Flower Dome  
& Cloud Forest

## LOCATION



### Size

- 128 metres long

### Capacity

- Up to 80 guests (standing) at any one time

### Facilities

- Specially scheduled Garden Rhapsody light and sound show
- Bar setup area at ground level (plastic wares only, due to safety concerns)
- North Colonnade area available in case of wet weather